

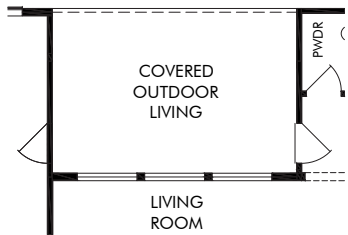
The Alyssa | Plan 5182 | First Floor

2,813 sq. ft. | 4 Bed | 3.5 Bath | 3 Car Tandem Garage | 1 Story

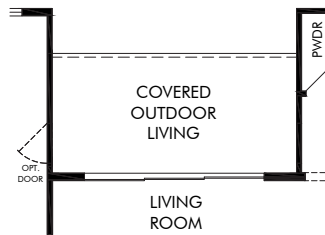
FLEX LIVING OPTIONS: Extended Outdoor Living. Sliding Door. Deluxe Kitchen. Primary Suite Bay. Utility Room. Bath 2 Shower. Fireplace. Media. Primary Shower. Guest Suite.

REV 12/20
Hou 5182-BASE

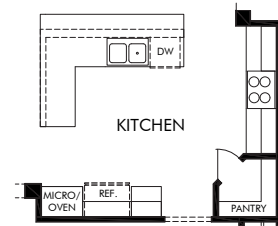
Any floorplan and/or elevation rendering is an artist's conceptual rendering intended to provide a general overview, but any such rendering does not constitute actual plans and specifications for any home. Renderings and pictures are representative and may depict floorplans, elevations, options, upgrades, landscaping, and other features and amenities that are not included as part of all homes and/or may not be available for all lots and/or in all communities. Renderings may not be drawn to scale. Any provided dimensions are approximate and actual dimensions may vary. Homes may be constructed with a floorplan that is the reverse of the floorplan rendering. Plans are copyrighted and/or otherwise subject to intellectual property rights of Meritage and/or others and cannot be reproduced or copied without Meritage's prior written consent. Plans and specifications, home features, and community information are subject to change, and homes to prior sale, at any time without notice or obligation. Additionally, deviations and variations may exist in any constructed home, including, without limitation: (i) substitution of materials and equipment of substantially equal or better quality; (ii) minor style, lot orientation, and color changes; (iii) minor variances in square footage and in room and space dimensions, and in window, door, utility outlet, and other improvement locations; (iv) changes as may be required by any state, federal, county, or local governmental authority in order to accommodate requested selections and/or options; and (v) value engineering and field changes.



① EXTENDED COVERED
OUTDOOR LIVING
PAT1611



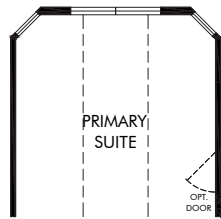
② SLIDING DOOR AT
GREAT ROOM
WIN9000



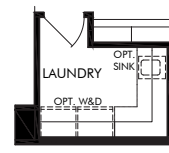
③ DELUXE KITCHEN
(STUDIO M)



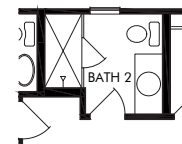
④ FIREPLACE AT
LIVING ROOM
FPO0001



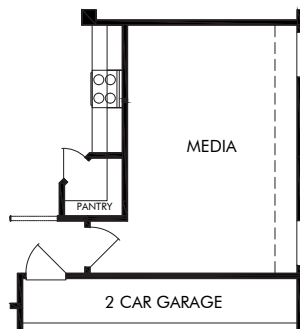
⑤ PRIMARY SUITE BAY
BAY0005



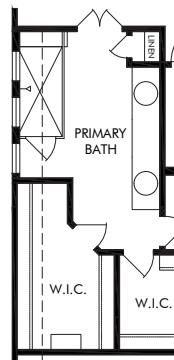
⑥ UTILITY ROOM
CABINETS
(STUDIO M)



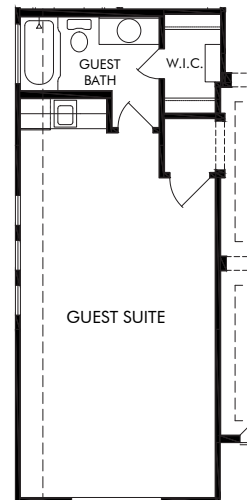
⑦ BATH 2 SHOWER
PLM0700



⑧ MEDIA ILO TANDEM
RMO0012



⑨ PRIMARY SHOWER
BTH0103



⑩ GUEST SUITE
BED0300

The Alyssa | Plan 5182 | Options

2,813 sq. ft. | 4 Bed | 3.5 Bath | 3 Car Tandem Garage | 1 Story

REV 12/20
Hou 5182-BASE

Any floorplan and/or elevation rendering is an artist's conceptual rendering intended to provide a general overview, but any such rendering does not constitute actual plans and specifications for any home. Renderings and pictures are representative and may depict floorplans, elevations, options, upgrades, landscaping, and other features and amenities that are not included as part of all homes and/or may not be available for all lots and/or in all communities. Renderings may not be drawn to scale. Any provided dimensions are approximate and actual dimensions may vary. Homes may be constructed with a floorplan that is the reverse of the floorplan rendering. Plans are copyrighted and/or otherwise subject to intellectual property rights of Meritage and/or others and cannot be reproduced or copied without Meritage's prior written consent. Plans and specifications, home features, and community information are subject to change, and homes to prior sale, at any time without notice or obligation. Additionally, deviations and variations may exist in any constructed home, including, without limitation: (i) substitution of materials and equipment of substantially equal or better quality; (ii) minor style, lot orientation, and color changes; (iii) minor variances in square footage and in room and space dimensions, and in window, door, utility outlet, and other improvement locations; (iv) changes as may be required by any state, federal, county, or local governmental authority in order to accommodate requested selections and/or options; and (v) value engineering and field changes.