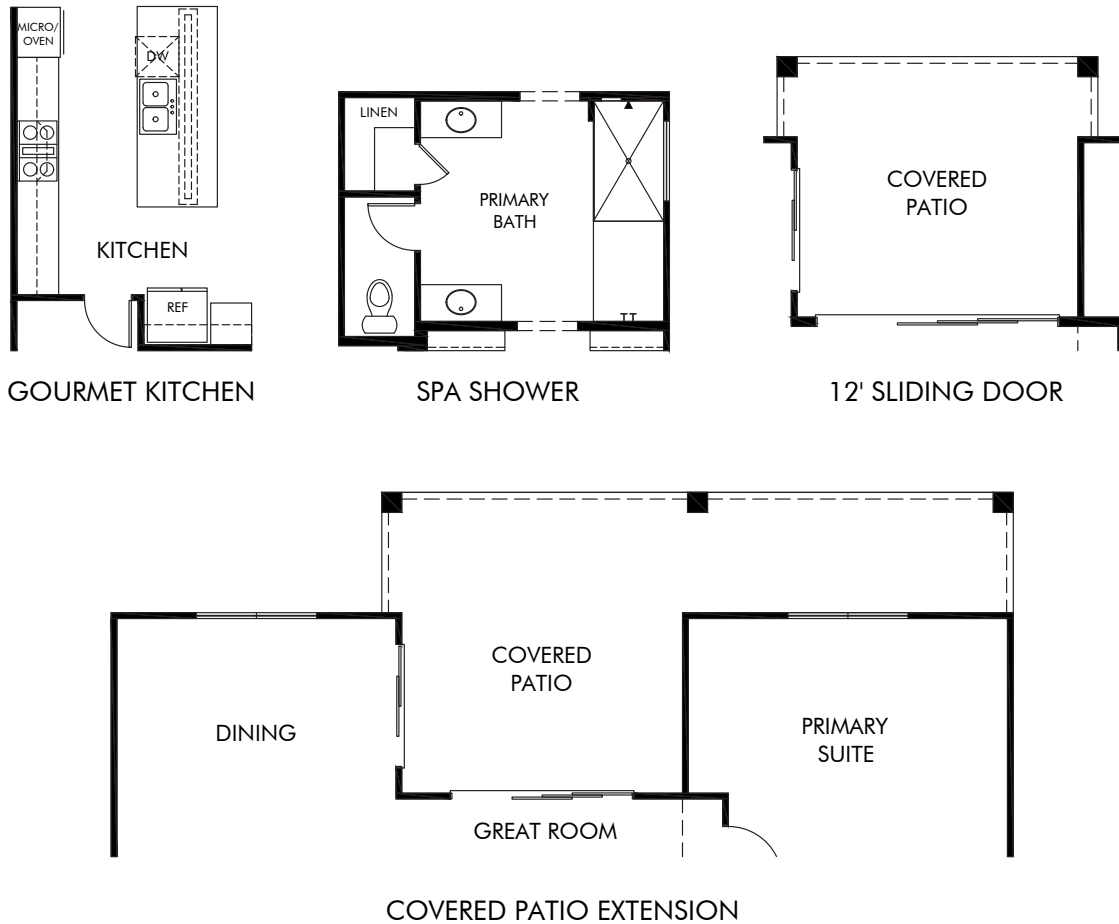


## Paloma Creek | Bailey

Approx. 2,530 sq. ft. | 5 Bed | 3 Bath | 3 Car Tandem Garage | 1 Story

**Home Configurations:** Gourmet Kitchen. Spa Shower. 12' Sliding Door. Extended Covered Patio.

Any floorplan and/or elevation rendering is an artist's conceptual rendering intended to provide a general overview, but any such rendering does not constitute actual plans and specifications for any home. Renderings and pictures are representative and may depict floorplans, elevations, options, upgrades, landscaping, and other features and amenities that are not included as part of all homes and/or may not be available for all lots and/or in all communities. Renderings may not be drawn to scale. Square footages and dimensions are approximate and may vary in construction and depending on the standard of measurement used, engineering and municipal requirements, or other site-specific conditions. Homes may be constructed with a floorplan that is the reverse of the floorplan rendering. Plans are copyrighted and/or otherwise subject to intellectual property rights of Meritage and/or others and cannot be reproduced or copied without Meritage's prior written consent. Plans and specifications, home features, and community information are subject to change, and homes to prior sale, at any time without notice or obligation. Pictures and other promotional materials are representative and may depict or contain floor plans, square footages, elevations, options, upgrades, landscaping, pool/spa, furnishings, appliances, and designer/decorator features and amenities that are not included as part of the home and/or may not be available in all communities. Not an offer or solicitation to sell real property. Offers to sell real property may only be made and accepted at the sales center for individual Meritage Homes communities. See sales associate for details. Meritage Homes®, Setting the standard for energy-efficient homes®, and Life. Built. Better.® are registered trademarks of Meritage Homes Corporation. ©2024 Meritage Homes Corporation. All rights reserved.



## Paloma Creek | Bailey | Configurations

Approx. 2,530 sq. ft. | 5 Bed | 3 Bath | 3 Car Tandem Garage | 1 Story

**Home Configurations:** Gourmet Kitchen. Spa Shower. 12' Sliding Door. Extended Covered Patio.

Any floorplan and/or elevation rendering is an artist's conceptual rendering intended to provide a general overview, but any such rendering does not constitute actual plans and specifications for any home. Renderings and pictures are representative and may depict floorplans, elevations, options, upgrades, landscaping, and other features and amenities that are not included as part of all homes and/or may not be available for all lots and/or in all communities. Renderings may not be drawn to scale. Square footages and dimensions are approximate and may vary in construction and depending on the standard of measurement used, engineering and municipal requirements, or other site-specific conditions. Homes may be constructed with a floorplan that is the reverse of the floorplan rendering. Plans are copyrighted and/or otherwise subject to intellectual property rights of Meritage and/or others and cannot be reproduced or copied without Meritage's prior written consent. Plans and specifications, home features, and community information are subject to change, and homes to prior sale, at any time without notice or obligation. Pictures and other promotional materials are representative and may depict or contain floor plans, square footages, elevations, options, upgrades, landscaping, pool/spa, furnishings, appliances, and designer/decorator features and amenities that are not included as part of the home and/or may not be available in all communities. Not an offer or solicitation to sell real property. Offers to sell real property may only be made and accepted at the sales center for individual Meritage Homes communities. See sales associate for details. Meritage Homes®, Setting the standard for energy-efficient homes®, and Life. Built. Better.® are registered trademarks of Meritage Homes Corporation. ©2024 Meritage Homes Corporation. All rights reserved.